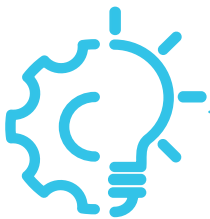


## i30 COMMERCIAL ICE AND WATER DISPENSER



### Innovative Features & Technology

- Combination nugget-style ice and water dispenser
- Capacitive touch sensor activation
- Available with optional base cabinet



### Easy Maintenance Design

- High clearance stainless steel legs
- Smooth front surface for quick and easy cleaning
- High capacity drip tray prevents spills



### Reliable & Dependable Components

- 30 lb. capacity stainless steel ice bin
- Ice production:
  - 380lbs/day @ 70F air + 50F water
  - 289lbs/day @ 90F air + 70F water
- Ventilation on top of unit allows freedom of placement



# i30 COMMERCIAL ICE AND WATER DISPENSER



Available with optional base cabinet

Description	Specification	Description	Specification
Unit Weight	223 lbs.	Daily Ice Production	380lbs/day @ 70F air + 50F water 289lbs/day @ 90F air + 70F water
Unit Dimensions	46.1”h x 16.6”w x 26.7”d	Ice Bin Capacity	30 lbs.
Base Cabinet Dimensions	28.3”h x 16.6”w x 26.7”d	Recommended Water Pressure	30-60 psi
Dispense Height	10.5”	Rated Voltage/Frequency	115v/60hz
Water Temperature	Ambient	Power Consumption	8.8A Nominal



630 Allendale Road, Suite 200  
King of Prussia, PA 19406  
855.558.9796



Certified by UL in accordance with NSF/ANSI-372.  
Certified by Intertek in accordance with NSF/ANSI-12 for automatic ice making equipment.